

PAVERS CONTRIBUTING TO LEED PROGRAM

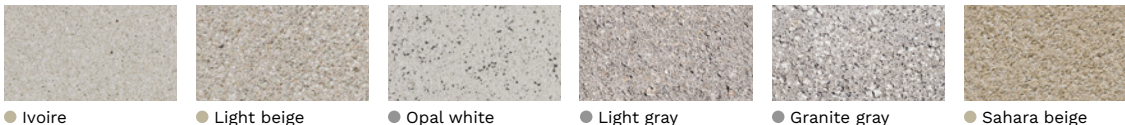
AVENUE, HEXAGONE 80, PRESTIGE 80



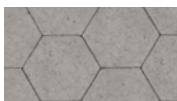
CHARACTERISTICS OF PAVERS AND SLABS CONTRIBUTING TO THE LEED PROGRAM				
COLORS	COLOR CODE	EMISSIVITY ASTM E 408	SOLAR REFLECTANCE ASTM E 903	IRS (SOLAR REFLECTANCE INDEX) ASTM E 1980
SMOOTH PREMIUM FINISH				
Ivory	L-01	0,908	0,41	46,8
Light beige	L-03	0,899	0,346	38,1
Opal white	L-05	0,912	0,47	54,8
Granite gray	L-11	0,908	0,305	33,2
Sahara beige	L-34	0,905	0,368	41,2
GRENART AND POLISHED PREMIUM FINISH				
Ivory	G-01 / M-01	0,902	0,529	62,4
Light beige	G-03 / M-03	0,9	0,398	45
Opal white	G-05 / M-05	0,894	0,504	58,8
Light gray	G-13 / M-13	0,899	0,307	33
Granite gray	G-11 / M-11	0,895	0,384	42,9
Sahara beige	G-34 / G-34	0,909	0,459	53,3

COLORS

AVENUE

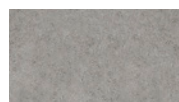


HEXAGONE 80 PAVER



● Granite gray

AVENUE 100 PERMEABLE PAVER SMOOTH FINISH GRENART FINISH

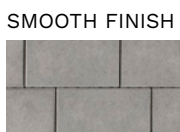


● Granite gray

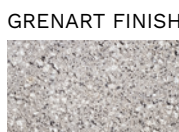


● Granite gray

PRESTIGE 80 PAVER

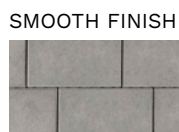


● Granite gray

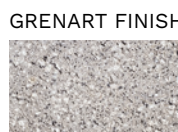


● Granite gray

PRESTIGE 60 SLAB



● Granite gray



● Granite gray

Manufacturing location: Ste-Marie

LEED colors can be applied to various types of pavers by special order.