

MESA® RETAINING WALL SYSTEM

SPLIT FACE FINISH



STRAIGHT SPLIT FACE BLOCK

	HEIGHT X WIDTH X LENGTH CM / IN	
	20,3 x 27,9 x 45,7	8 x 11 x 18
Weight/unit	36 kg	79,2 lb
Weight/cube	1470 kg	3235 lb
No. of units	10,8 mcx / m ²	1 mcx / ft ²
Qty/cube	40 unités	5 rows

SPECIFICATIONS	CODE	COLOR
	PBR-910E-99	Smoke gray



STRAIGHT SPLIT FACE CORNER BLOCK

	HEIGHT X WIDTH X LENGTH CM / IN	
	20,3 x 22,9 x 45,7	8 x 9 x 18
Weight/unit	36 kg	79,2 lb
Weight/cube	606 kg	1334 lb
No. of units	7,2 mcx / m ²	0,7 mcx / ft ²
Qty/cube	16 unités	2 rows

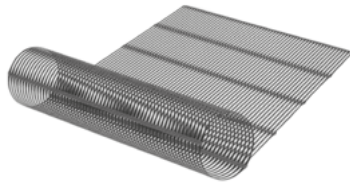
SPECIFICATIONS	CODE	COLOR
	PBR-903E-99	Smoke gray



STRAIGHT SPLIT FACE COPING

	HEIGHT X WIDTH X LENGTH CM / IN	
	10,2 x 27,9 x 45,7	4 x 11 x 18
Weight/unit	29 kg	63,8 lb
Weight/cube	1654 kg	3640 lb
Long/cube	25,6 L. m.	84,0 L. ft.
Long/rang	3,66 L. m.	12 L. ft.
Qty/cube	56 unités	7 rows

SPECIFICATIONS	CODE	COLOR
	PBR-901E-99	Smoke gray



MESA® GEOGRID

	HEIGHT X WIDTH X LENGTH CM / IN	
UX1100MSE	1,33 x 76,2 m	52 ^{1/4} in x 250 ft
Weight	32 kg	70 lb
UX1400MSE	1,33 x 76,2 m	52 ^{1/4} in x 250 ft
Weight	33 kg	73 lb
UX1500MSE	1,33 x 61 m	52 ^{1/4} in x 200 ft
Weight	43 kg	95 lb



MESA® CONNECTOR

Maximum recommended height: 1.20 m (4 ft). For a higher height, use Mesa geogrids, see the installation guide.

(1) The prices of the Mesa retaining wall system are available on request and depend on the height of the wall and the conditions of the ground. Contact our sales office for a quote.

The quantities ordered must be purchased in full and no returns will be accepted.

MESA® RETAINING WALL SYSTEM

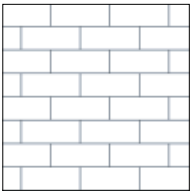
SPLIT FACE FINISH

COLOR



● Smoke gray

PATTERN



Pattern 1

The layout shown in the above illustration is for information purposes only. Bolduc disclaims all responsibility for the excess or lack of blocks resulting from an installation according to these laying patterns.

TECHNICAL INFORMATIONS

Product	Dimensional tolerances	Compressive strength	Resistance to freeze-thaw cycles in a saline solution	Maximum height gravity wall
Mesa Block	Length: ± 3 mm ($\pm 1/8$ po) Width: ± 3 mm ($\pm 1/8$ po) Height: ± 2 mm ($\pm 5/64$ po)	35 MPa	0,6 kg / m ² max	1,2 m (4 pi)

* The maximum wall height includes the portion buried in the ground.

If you plan to build walls higher than the maximum recommended height, you will need to reinforce the wall with geogrids.

In this case, please refer to a geotechnical professional, a professional landscaper or contact us for more details on reinforced walls.