

LINIA™ 100 PAVER

REGULAR FINISH



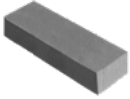
LINIA™ 100 PAVER MODULE 10

	HEIGHT/WIDTH/LENGTH	
	DIMENSIONS (CM)	DIMENSIONS (IN)
	10 x 10 x 45	3 ^{15/16} x 3 ^{15/16} x 17 ^{3/4}
Units/Surface	22,2 / m ²	2,06 / ft ²
Qty/row	0,81 m ²	8,72 ft ²
Qty/cube	5,67 m ²	61,04 ft ² 7 rows
Weight/unit avg.	11 kg	24 lb
Weight/cube	1372 kg	3019 lb

SPECIFICATIONS	CODES	COLORS
	PPC-710R-10	Gray
	PPC-710R-50	Black

Sold separately

Approximate coverage areas for one bag of polymeric sand (22,7 kg) 2,20 m² 23,7 ft²



LINIA™ 100 PAVER MODULE 20

	HEIGHT/WIDTH/LENGTH	
	DIMENSIONS (CM)	DIMENSIONS (IN)
	10 x 20 x 60	3 ^{15/16} x 7 ^{7/8} x 23 ^{5/8}
Units/Surface	8,3 / m ²	0,77 / ft ²
Qty/row	0,96 m ²	10,33 ft ²
Qty/cube	6,72 m ²	72,33 ft ² 7 rows
Weight/unit avg.	28 kg	62 lb
Weight/cube	1607 kg	3536 lb

SPECIFICATIONS	CODES	COLORS
	PPC-720R-10	Gray
	PPC-720R-50	Black

Sold separately

Approximate coverage areas for one bag of polymeric sand (22,7 kg) 4,00 m² 43,0 ft²

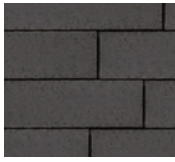
LINIA™ 100 PAVER

REGULAR FINISH

COLORS

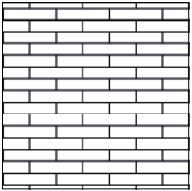


● Gray

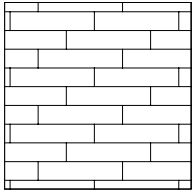


● Black

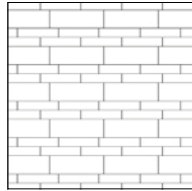
PATTERNS



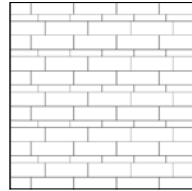
Pattern 1
Runner pattern 1/2



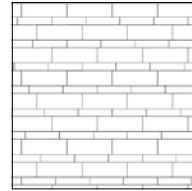
Pattern 2
Runner pattern 1/3



Pattern 3
Runner pattern
Module 10 et 20



Pattern 4
Runner pattern
Module 10 et 20



Pattern 5
Runner pattern
Module 10 et 20

The layout shown in the above illustration is for information purposes only. Bolduc disclaims all responsibility for the excess or lack of pavers resulting from an installation according to these laying patterns.

TECHNICAL INFORMATIONS

Product	Standard	Compressive strength	Resistance to freeze-thaw cycles in a saline solution	Water absorption	Dimensional tolerances
Linia 100 paver	CSA A231.2	50 MPa (7250 psi)	Maximum loss of initial weight in a saline solution (NaCl 3 %): 225 g/m ² (0,74 oz / ft ²) after 28 cycles 500 g/m ² (1,64 oz / ft ²) after 49 cycles	5 % maximum	Length: -1 mm to +2 mm (-1/32 in to + 5/64 in) Width: -1 mm to +2 mm (-1/32 in to + 5/64 in) Height: ±3 mm (±1/8 in)

Cover snow removal tools with Teflon or neoprene protectors to minimize the risk of damage from scratches.