

AVENUE 100® PERMEABLE PAVER

GRENART PREMIUM ① AND SMOOTH PREMIUM FINISH ①



AVENUE 100® PERMEABLE PAVER



	HEIGHT/WIDTH/LENGTH	
	DIMENSIONS (CM)	DIMENSIONS (IN)
	10 x 15 x 30	3 ^{15/16} x 5 ^{7/8} x 11 ^{13/16}
	8mm joint 8% opening area	
Units/Surface	22,2 / m ²	2,06 / ft ²
Qty/row	0,93 m ²	11,63 ft ²
Qty/cube	7,56 m ²	81,38 ft ²
		7 rows
Weight/unit avg.	9,9 kg	21,8 lb
Weight/cube	1695 kg	3729 lb

SPECIFICATIONS	CODES	COLORS
Smooth Premium finish ①	PPU-610L-11	Granite gray ②
Smooth Premium finish ①	PPU-610L-55	Anthracite
Grenart Premium finish ①	PPU-610G-11	Granite gray ②
Grenart Premium finish ①	PPU-610G-55	Anthracite

COLORS

GRENART FINISH

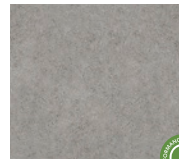


● Granite gray

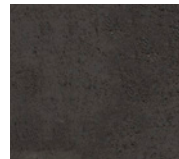


● Anthracite

SMOOTH FINISH



● Granite gray

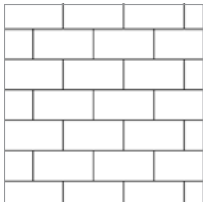


● Anthracite



Colors with solar reflectance indices contributing to the LEED program in order to reduce the creation of heat islands in urban areas as much as possible.

PATTERN



Runner pattern

The layout shown in the above illustration is for information purposes only. Bolduc disclaims all responsibility for the excess or lack of pavers resulting from an installation according to these laying patterns.

TECHNICAL INFORMATIONS

Product	Standard	Compressive strength	Resistance to freeze-thaw cycles in a saline solution	Water absorption	Dimensional tolerances
Avenue 100 permeable paver	CSA A231.2	50 MPa (7250 psi)	Maximum loss of initial weight in a saline solution (NaCl 3 %): 225 g/m ² (0,74 oz / ft ²) after 28 cycles 500 g/m ² (1,64 oz / ft ²) after 49 cycles	5 % maximum	Length: -1 mm to +2 mm (-1/32 in to + 5/64 in) Width: -1 mm to +2 mm (-1/32 in to + 5/64 in) Height: ±3 mm (±1/8 in)

Cover snow removal tools with Teflon or neoprene protectors to minimize the risk of damage from scratches.